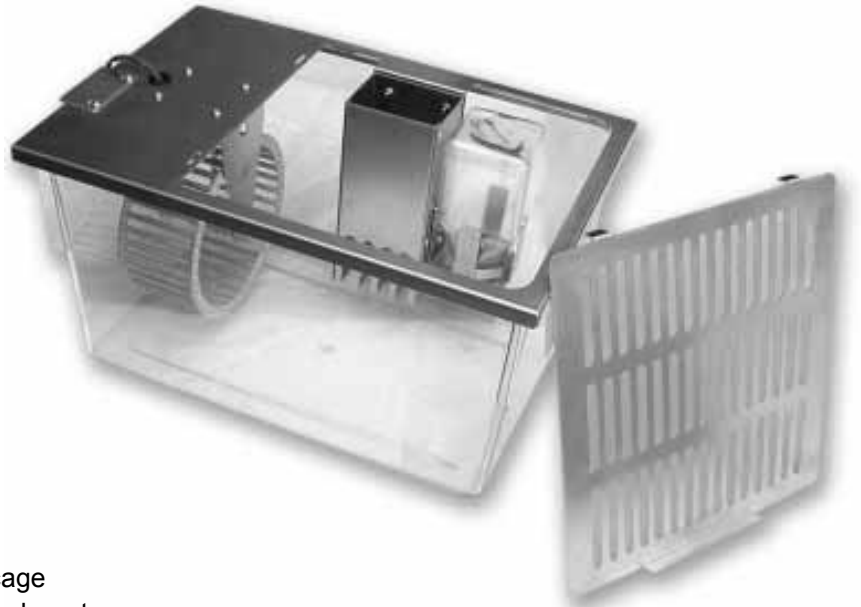




SINGLE ACTIVITY WHEEL CHAMBER SYSTEM FOR MICE Model 80820

This Single Activity Wheel Chamber System Model 80820 was designed for long-term circadian rhythm and general activity studies. The chamber incorporates many features to allow for animal well-being and easy maintenance of system components. The chamber includes food and water support and includes free access to the activity wheel. The activity wheel can be monitored by one of our optional counter modules. The counter can also report activity data to a computer using our Activity Wheel Monitor Starter and Expander Interface Model 86056 and Model 86057.



Features:

- Uses 9.3" x 13.9" x 7.7" clear polycarbonate cage
- Stainless steel top cover lays flush onto polycarbonate cage
- All components are secured to top cover for one step removal
- Feeder and water bottle are attached to top cover allowing for easy access
- Feeder has sighting slot on back to view feed level
- Removable lightweight 5" diameter anodized aluminum wheel is easy to clean and maintain and is run on two Rulon bearings
- Equipped with external mounting bracket for mounting of an optional electronic counter
- Removable stainless steel vented access hatch allows for easy access to the animal
- Complete chamber can be easily disassembled for cleaning

Technical Specifications:

Dimensions:	9.3" x 13.9" x 7.7"
Weight:	3.0lbs.
Wheel Diameter:	5.0" ID
Run Distance:	0.40 meters/revolution



Options:

- **Model 86060** - Activity Wheel Counter with digital display for stand alone use or computer interface.
- **Model 86061** - Activity Wheel Counter for computer interface only (includes 86051-7 cable).
- **Model 86070** - Activity Wheel Counter with motor, brake, and auxiliary control (includes 86051-7 cable).
- **Model 86070-B1** - Activity Wheel Servo Controlled Brake
- **Model 86051-7** - Seven-foot cable for connection between the counter and the counter interfaces Model 86056 or Model 86057
- **Model 86051-14** - Fourteen-foot cable for connection between the counter and the counter interfaces Model 86056 or Model 86057